

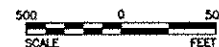
LEGEND:

- INSTANT STUDY AREA BOUNDARY
- 1-FOOT GRADING CONTOUR
- LIMIT OF WASTE
- REGRADING REQUIRED

- ADDITIONAL RIPRAP REQUIRED
- AREA LESS THAN 1 FOOT (REQUIRES 2" OF FILL)
- AREA LESS THAN 1.5 FEET (REQUIRES 1.5" OF FILL)
- AREA LESS THAN 2 FEET (REQUIRES 1" OF FILL)
- AREA LESS THAN 2.5 FEET (REQUIRES 6" OF FILL)

NOTES:

1. FILL AREAS AND DEPTHS ARE BASED ON A NOVEMBER 2001 SOIL COVER DEPTH STUDY PERFORMED BY SCS ENGINEERS.
2. AREA NORTH OF ORIGINAL PROPERTY LINE IN NORTHEAST CANYON WAS NOT STUDIED FOR COVER THICKNESS BY SCS. A 2-FOOT THICK LAYER OF ADDITIONAL SOIL IS PLANNED TO BE PLACED IN THIS AREA TO MAKE UP THE SOIL PROTECTION LAYER.
3. CONTRACTOR TO PROVIDE STAKING PLAN BASED ON AREAS SHOWN FOR APPROVAL PRIOR TO GRADING OPERATIONS COMMENCING.
4. THE CONTRACTOR CAN UTILIZE ANY POTENTIAL BORROW AREA THAT MEETS THE FOLLOWING CRITERIA:
 - IS WITHIN BLM LAND AND OUTSIDE THE INSTANT STUDY AREA.
 - CAN BE EXCAVATED WITHOUT CHANGING THE ULTIMATE OFF-SITE FLOW PATHS.
 - DOES NOT NEGATIVELY IMPACT ON-SITE "CONTROLLED" FLOW PATHS.
 - DOES NOT CREATE AREAS OF FLOW CONCENTRATION.
 - YIELDS SUITABLE MATERIAL THAT MEETS THE APPROPRIATE SPECIFICATIONS FOR THE INTENDED USE.

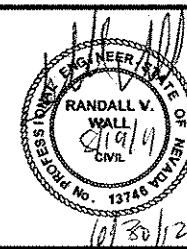


REV	DATE	DES	REVISION DESCRIPTION	CADD	CHK	RW
8/19/11	JP		REISSUED FOR PERMITTING/CONSTRUCTION	ML	MB	RW
7/1/11	JP		REISSUED FOR PERMITTING/CONSTRUCTION	ML	MB	RW
2/24/11	JP		ISSUED FOR PERMITTING/CONSTRUCTION	ML	MB	RW
5/5/10	JP		ISSUED FOR BIDDING	ML	AN	RW

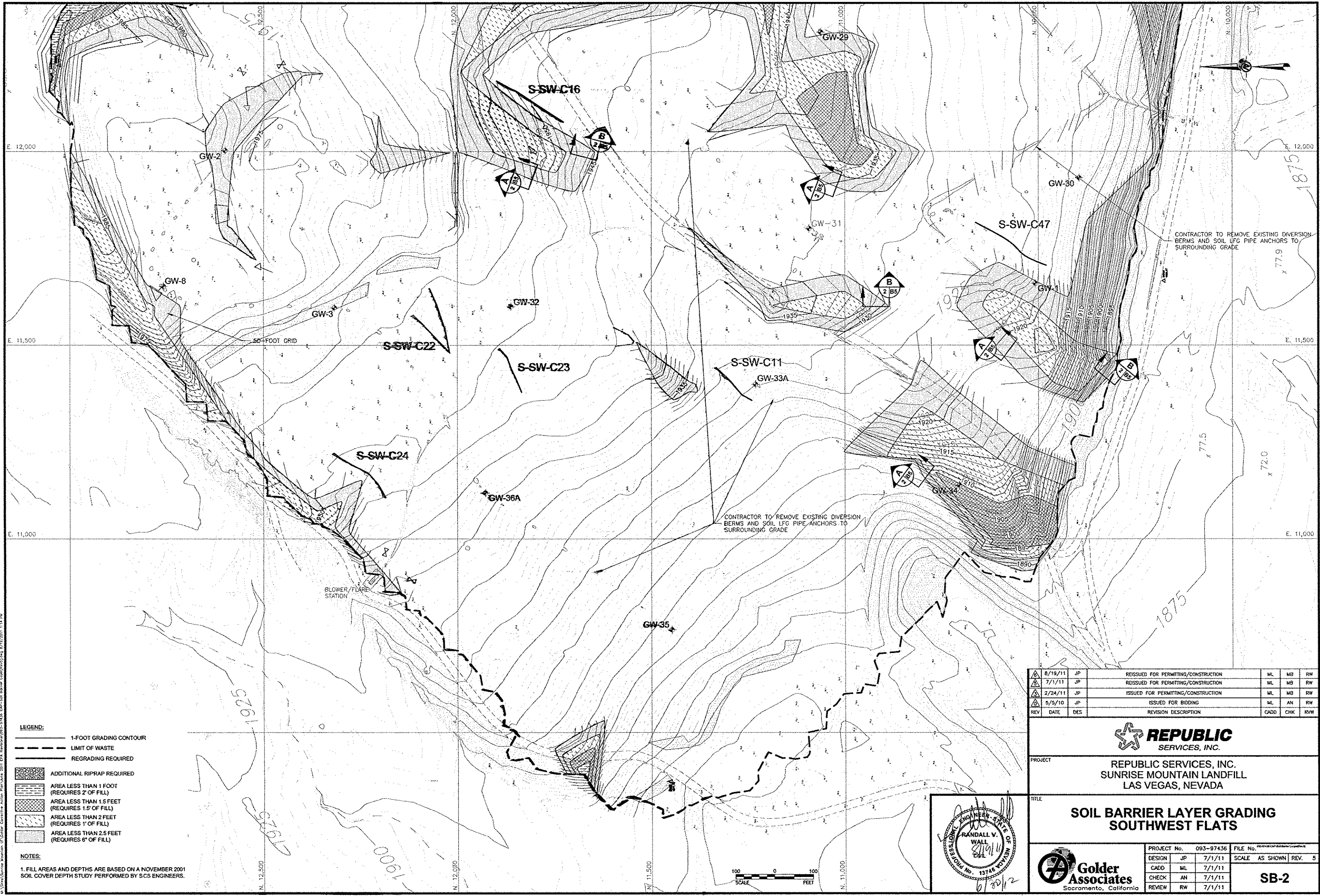


PROJECT
REPUBLIC SERVICES, INC.
SUNRISE MOUNTAIN LANDFILL
LAS VEGAS, NEVADA

TITLE
**SOIL BARRIER LAYER GRADING
SITE PLAN**







PROJECT No.	093-97436	FILE No.	10/19/11
DESIGN	JP	7/1/11	SCALE AS SHOWN REV. 5
CADD	ML	7/1/11	SB-1
CHECK	AN	7/1/11	
REVIEW	RW	7/1/11	



- LEGEND:**
- 1-FOOT GRADING CONTOUR
 - LIMIT OF WASTE
 - REGRADING REQUIRED
 - ADDITIONAL RIPRAP REQUIRED
 - AREA LESS THAN 1 FOOT (REQUIRES 2" OF FILL)
 - AREA LESS THAN 1.5 FEET (REQUIRES 1.5" OF FILL)
 - AREA LESS THAN 2 FEET (REQUIRES 1" OF FILL)
 - AREA LESS THAN 2.5 FEET (REQUIRES 6" OF FILL)

NOTES:
1. FILL AREAS AND DEPTHS ARE BASED ON A NOVEMBER 2001 SOIL COVER DEPTH STUDY PERFORMED BY SCS ENGINEERS.

	8/19/11	JP	REISSUED FOR PERMITTING/CONSTRUCTION	ML	MB	RW
	7/1/11	JP	REISSUED FOR PERMITTING/CONSTRUCTION	ML	MB	RW
	2/24/11	JP	ISSUED FOR PERMITTING/CONSTRUCTION	ML	MB	RW
	5/5/10	JP	ISSUED FOR BIDDING	ML	AN	RW
REV	DATE	DES	REVISION DESCRIPTION	CADD	CHK	RW

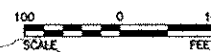
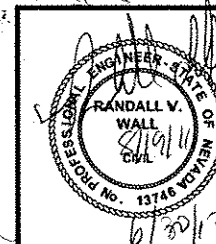


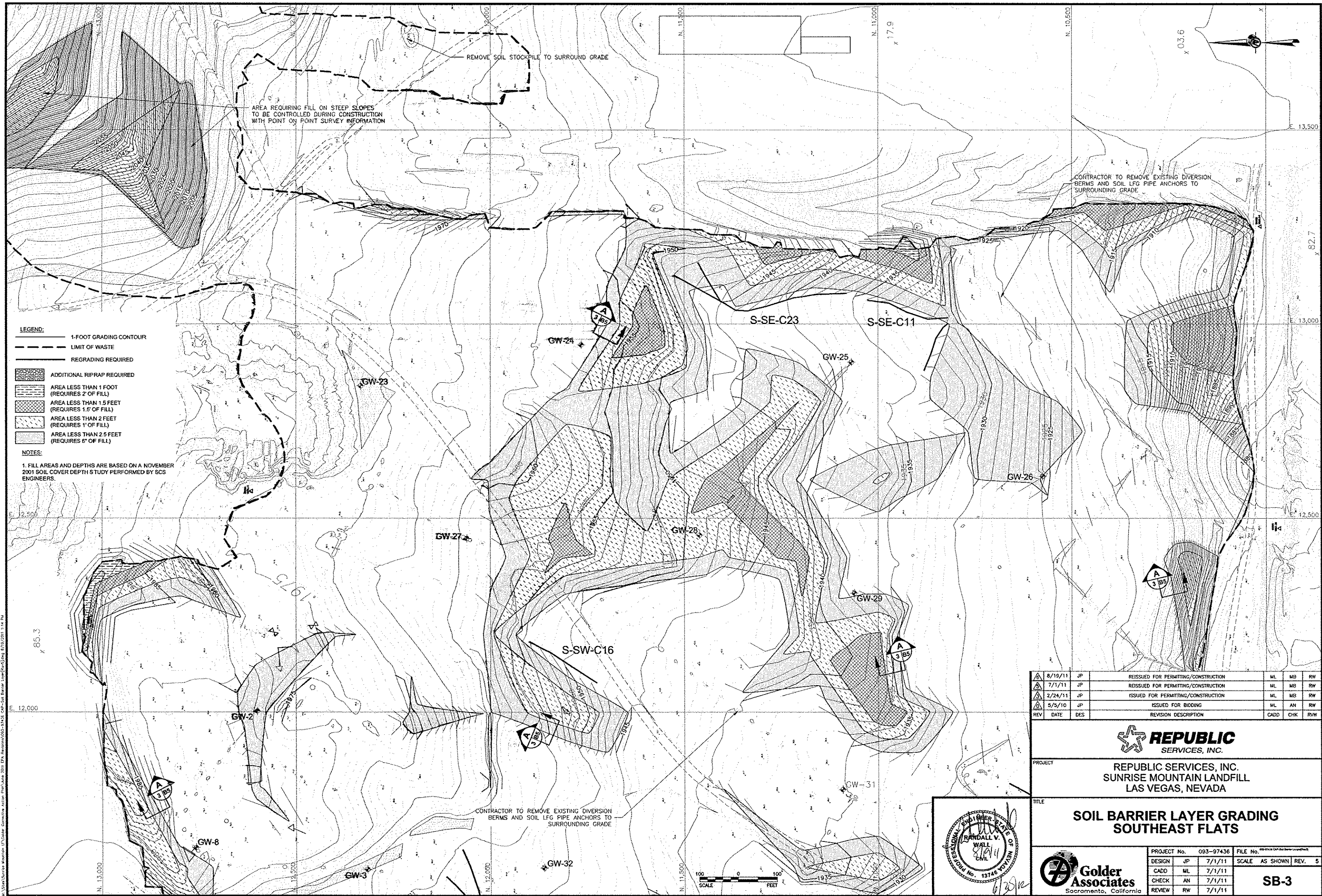
PROJECT
REPUBLIC SERVICES, INC.
SUNRISE MOUNTAIN LANDFILL
LAS VEGAS, NEVADA

TITLE
**SOIL BARRIER LAYER GRADING
SOUTHWEST FLATS**

	PROJECT No.	093-97436	FILE No.	13746
	DESIGN	JP	7/1/11	SCALE AS SHOWN
	CADD	ML	7/1/11	REV. 5
	CHECK	AN	7/1/11	
	REVIEW	RW	7/1/11	

SB-2





REV	DATE	DES	REVISION DESCRIPTION	CADD	CHK	RW
8/19/11	JP		REISSUED FOR PERMITTING/CONSTRUCTION	ML	MB	RW
7/1/11	JP		REISSUED FOR PERMITTING/CONSTRUCTION	ML	MB	RW
2/24/11	JP		ISSUED FOR PERMITTING/CONSTRUCTION	ML	MB	RW
5/5/10	JP		ISSUED FOR BIDDING	ML	AN	RW

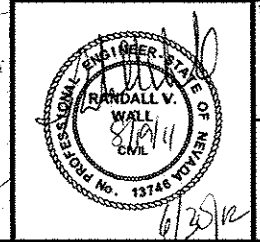


PROJECT
REPUBLIC SERVICES, INC.
SUNRISE MOUNTAIN LANDFILL
LAS VEGAS, NEVADA

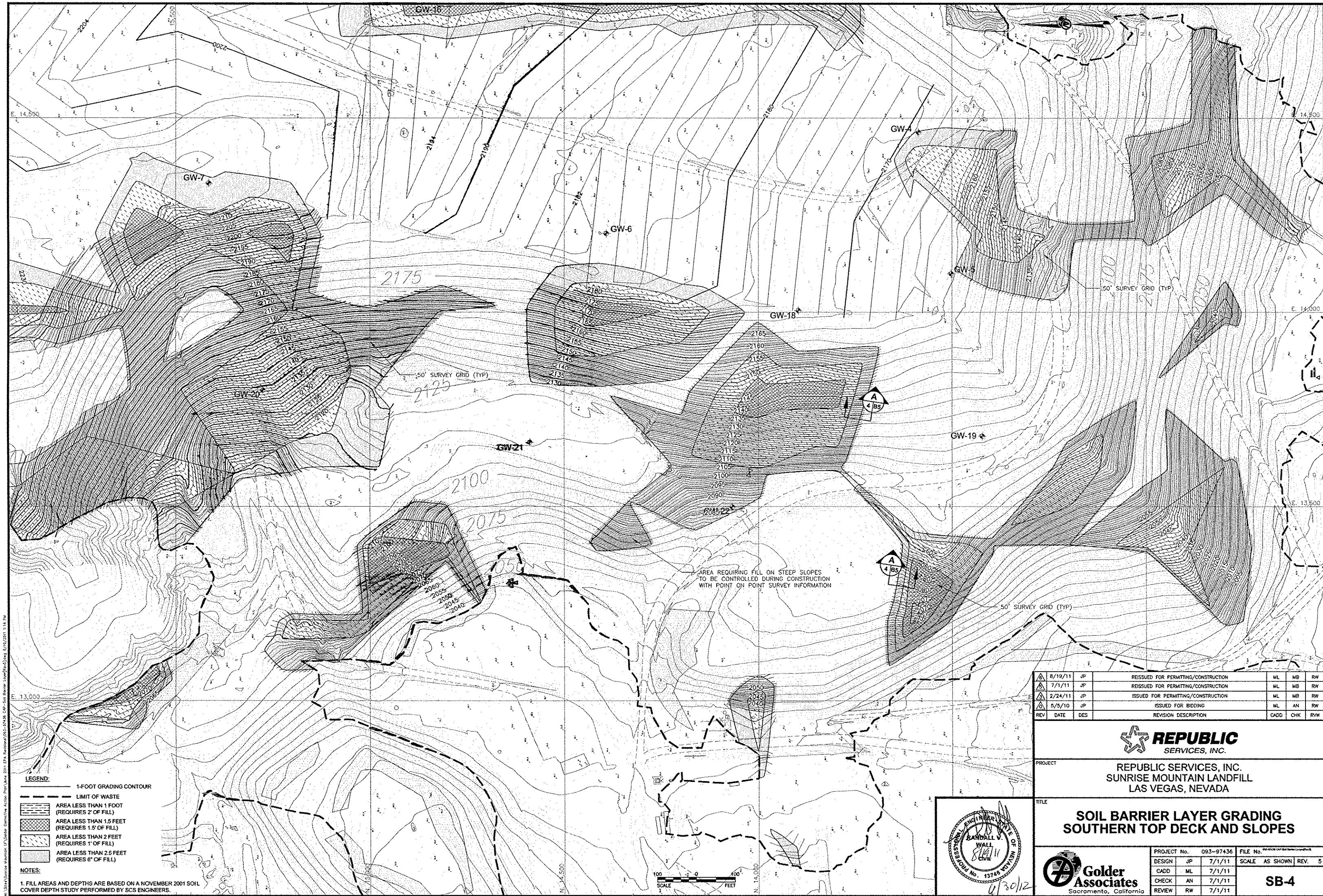
TITLE
SOIL BARRIER LAYER GRADING
SOUTHEAST FLATS

PROJECT No.	093-97436	FILE No.	AS SHOWN	REV.	5
DESIGN	JP	7/1/11			
CADD	ML	7/1/11			
CHECK	AN	7/1/11			
REVIEW	RW	7/1/11			

SB-3



\\s\studies\mtn\mtn\cadd\proj\093-97436\cadd\sb\lsg\sb\lsg.dwg 8/13/2011 1:14 PM



- LEGEND:**
- 1-FOOT GRADING CONTOUR
 - LIMIT OF WASTE
 - AREA LESS THAN 1 FOOT (REQUIRES 2" OF FILL)
 - AREA LESS THAN 1.5 FEET (REQUIRES 1.5" OF FILL)
 - AREA LESS THAN 2 FEET (REQUIRES 1" OF FILL)
 - AREA LESS THAN 2.5 FEET (REQUIRES 6" OF FILL)

NOTES:

1. FILL AREAS AND DEPTHS ARE BASED ON A NOVEMBER 2001 SOIL COVER DEPTH STUDY PERFORMED BY SCS ENGINEERS.

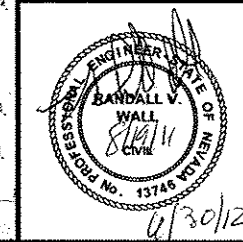
6	8/19/11	JP	REISSUED FOR PERMITTING/CONSTRUCTION	ML	MB	RW
7	7/1/11	JP	REISSUED FOR PERMITTING/CONSTRUCTION	ML	MB	RW
8	2/24/11	JP	ISSUED FOR PERMITTING/CONSTRUCTION	ML	MB	RW
9	5/5/10	JP	ISSUED FOR BIDDING	ML	AN	RW
REV	DATE	DES	REVISION DESCRIPTION	CADD	CHK	R/W

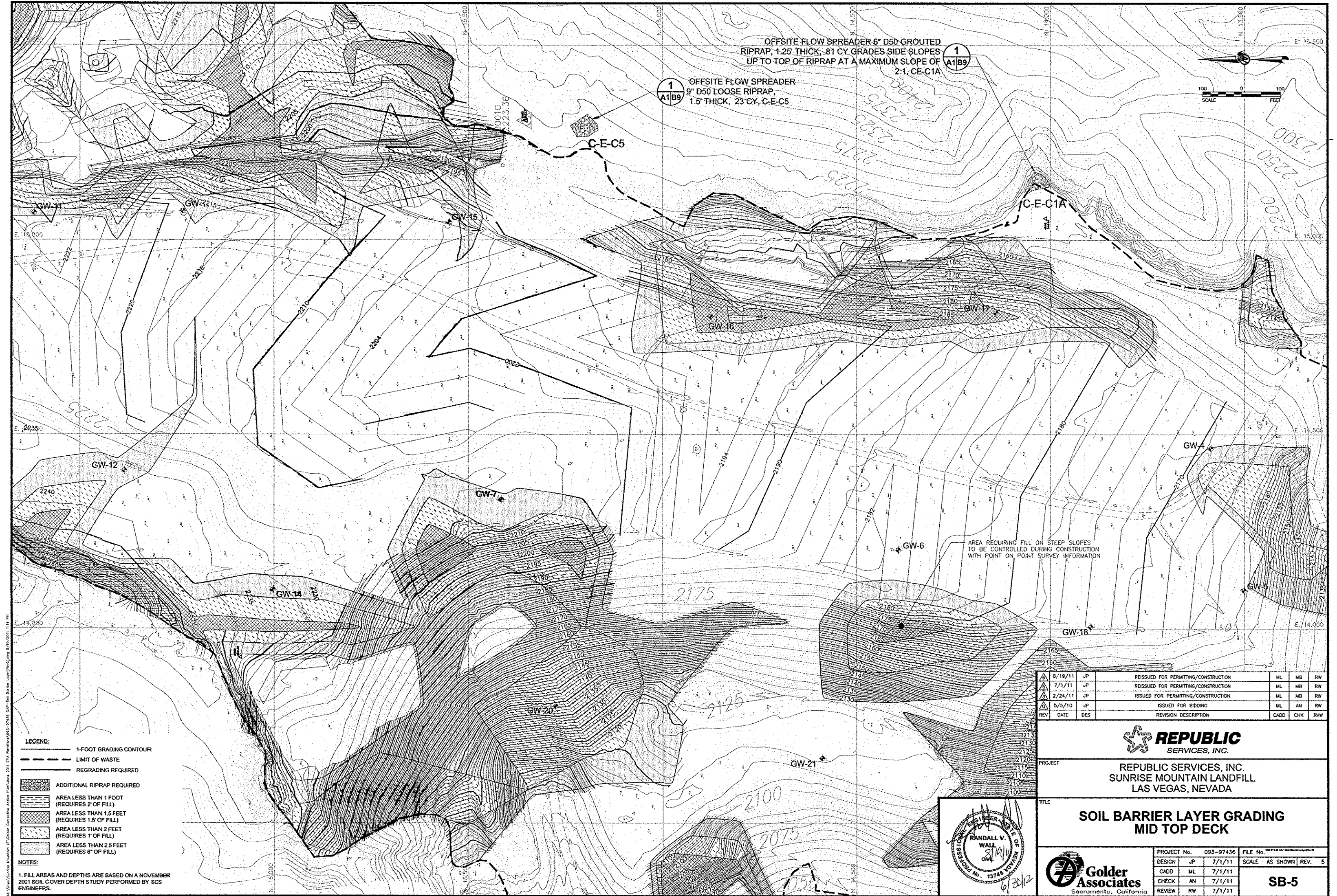


PROJECT
REPUBLIC SERVICES, INC.
SUNRISE MOUNTAIN LANDFILL
LAS VEGAS, NEVADA

TITLE
SOIL BARRIER LAYER GRADING
SOUTHERN TOP DECK AND SLOPES

PROJECT No.	093-97436	FILE No.	13745
DESIGN	JP	7/1/11	SCALE AS SHOWN
CADD	ML	7/1/11	REV. 5
CHECK	AN	7/1/11	SB-4
REVIEW	RW	7/1/11	





OFFSITE FLOW SPREADER 6" D50 GROUTED
RIPRAP, 1.25' THICK, 81 CY GRADES SIDE SLOPES
UP TO TOP OF RIPRAP AT A MAXIMUM SLOPE OF
2:1, CE-C1A

OFFSITE FLOW SPREADER
9" D50 LOOSE RIPRAP,
1.5' THICK, 23 CY, C-E-C5

AREA REQUIRING FILL ON STEEP SLOPES
TO BE CONTROLLED DURING CONSTRUCTION
WITH POINT ON POINT SURVEY INFORMATION

- LEGEND:**
- 1-FOOT GRADING CONTOUR
 - LIMIT OF WASTE
 - REGRADE REQUIRED
 - ADDITIONAL RIPRAP REQUIRED
 - AREA LESS THAN 1 FOOT (REQUIRES 2" OF FILL)
 - AREA LESS THAN 1.5 FEET (REQUIRES 1.5" OF FILL)
 - AREA LESS THAN 2 FEET (REQUIRES 1" OF FILL)
 - AREA LESS THAN 2.5 FEET (REQUIRES 6" OF FILL)

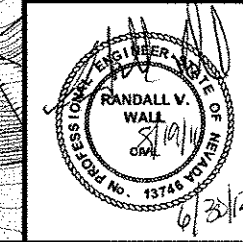
NOTES:
1. FILL AREAS AND DEPTHS ARE BASED ON A NOVEMBER
2001 SOIL COVER DEPTH STUDY PERFORMED BY SCS
ENGINEERS.

REV	DATE	DES	REVISION DESCRIPTION	CADD	CHK	RW
1	8/18/11	JP	ISSUED FOR PERMITTING/CONSTRUCTION	ML	MB	RW
2	7/1/11	JP	REISSUED FOR PERMITTING/CONSTRUCTION	ML	MB	RW
3	2/24/11	JP	ISSUED FOR PERMITTING/CONSTRUCTION	ML	MB	RW
4	5/5/10	JP	ISSUED FOR BIDDING	ML	AN	RW



PROJECT
REPUBLIC SERVICES, INC.
SUNRISE MOUNTAIN LANDFILL
LAS VEGAS, NEVADA

TITLE
SOIL BARRIER LAYER GRADING
MID TOP DECK



PROJECT No.	093-97436	FILE No.	13748 Golder Associates
DESIGN	JP	7/1/11	SCALE AS SHOWN REV. 5
CADD	ML	7/1/11	
CHECK	AN	7/1/11	
REVIEW	RW	7/1/11	

SB-5

